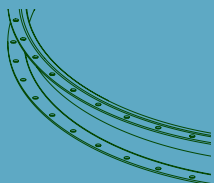


UType Seal



WHITE

Material Type:.....White Food Quality EPDM Rubber
Code.....FC-R-148

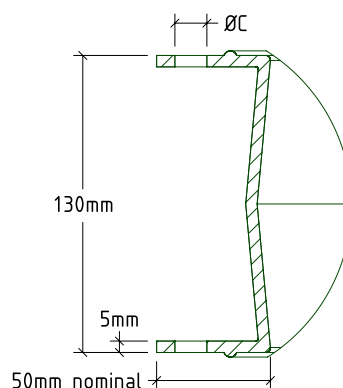
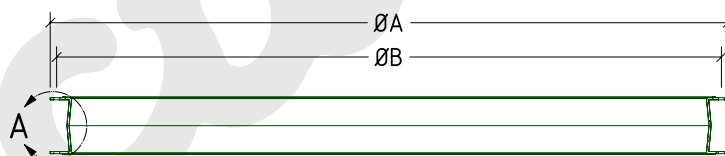
Our UType Seals are manufactured from white FDA-approved EPDM and are designed to provide a secure, dust-tight and flexible connection between the silo and bin activator.

The U-profile allows the seal to sit neatly over mating flanges, accommodating vibration and movement while maintaining sealing integrity.

Suitable for food, pharmaceutical and industrial applications.

UType Seal Range

Part No	A	B	C	Hole No
FC-UType 850	930	900	Ø14	24
FC-UType 900	980	950	Ø14	24
FC-UType 1000	1080	1050	Ø14	24
FC-UType 1100	1180	1150	Ø14	24
FC-UType 1250	1330	1300	Ø14	24
FC-UType 1350	1430	1400	Ø14	36
FC-UType 1500	1580	1550	Ø14	48
FC-UType 1800	1880	1850	Ø14	72
FC-UType 2100	2180	2150	Ø14	72
FC-UType 2200	2280	2250	Ø14	72
FC-UType 2500	2580	2550	Ø14	72



Other sizes available on request.

Care should be taken in selecting the most suitable quality for each application.

Advice is available from the sales team but final responsibility remains with the customer.